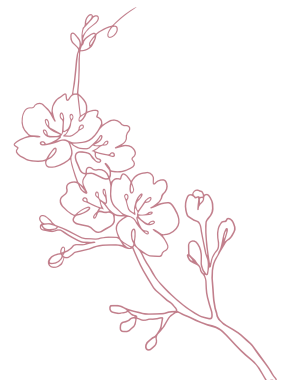
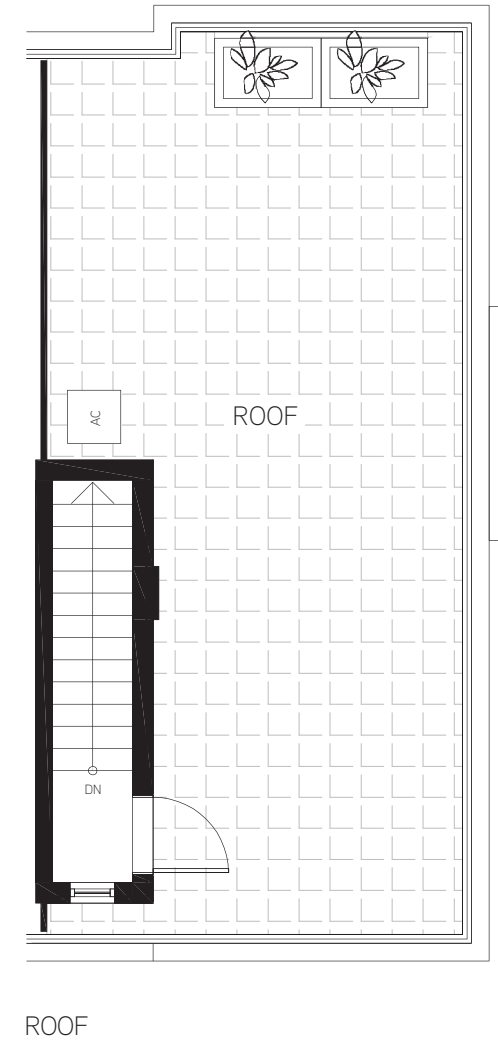
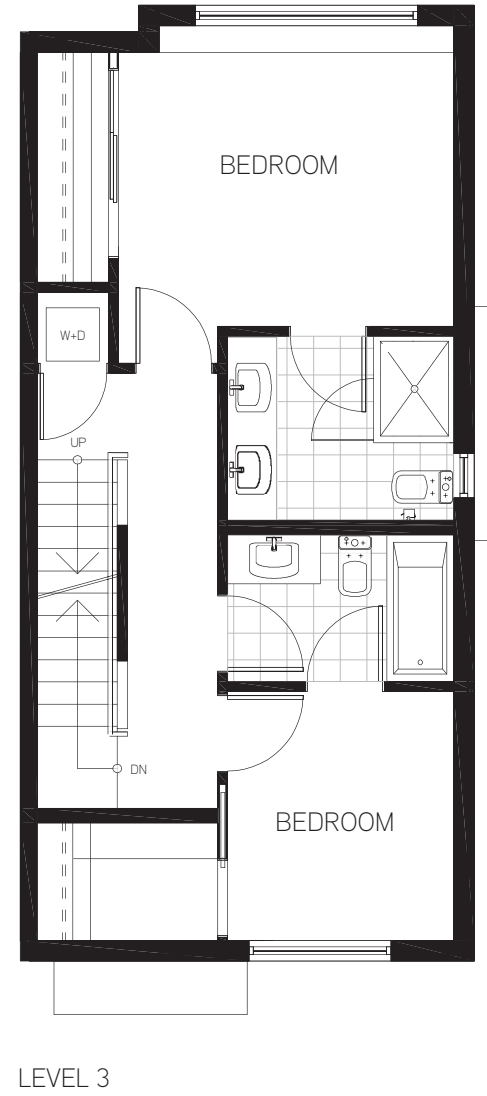
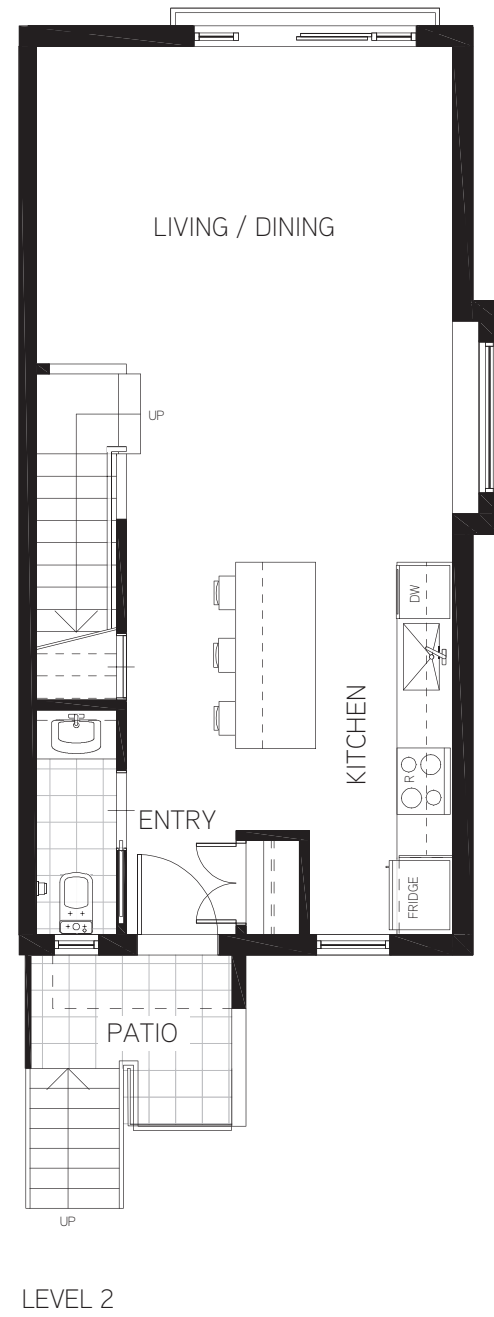


**Townhome B10**  
2 bed 2.5 bath

interior 1,178sf  
 exterior 455 sf  
 total 1,633 sf



**8. CHERRY BLOSSOM**

This is not an offering for sale. Any such offering can only be made with a disclosure statement. Prices are subject to change without notice. Artist's renderings and maps are representations only and may not be accurate. The developer reserves the right to make changes and modifications to the information contained herein without prior notice. Dimensions, sizes, specifications layout and materials are approximate only and subject to change without notice. E & O.E.